



# MONTHLY MEMBERSHIP PROGRESS REPORT

District 25 C

Results as of: 08/31/2017

GMT: STEVE ANTON

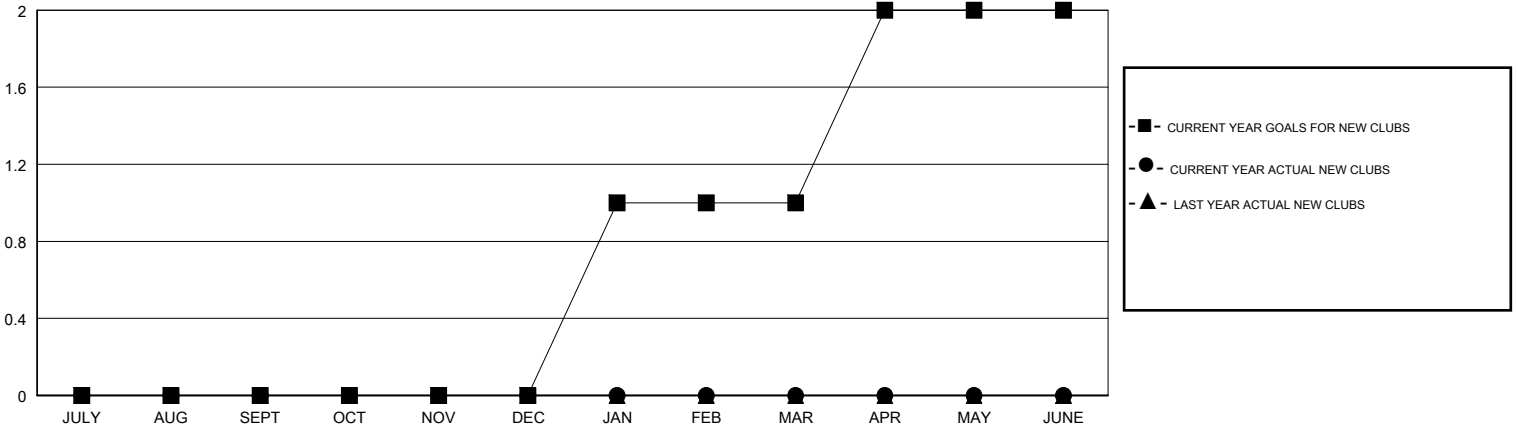
LOCATION INDIANA

GMT CA

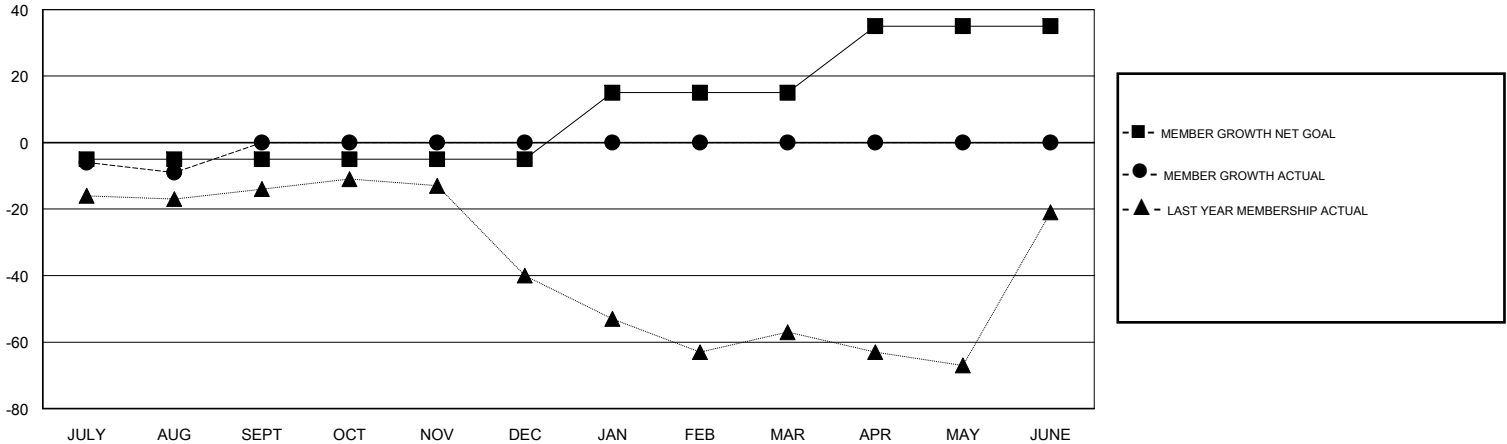
Clubs			
RESULTS FOR 2017-2018			
QUARTER	NEW CLUB GOAL	NEW CLUBS	DROPPED CLUBS
JULY/AUG/SEPT	0	0	0
OCT/NOV/DEC	0	0	0
JAN/FEB/MAR	1	0	0
APR/MAY/JUNE	1	0	0

Members			
RESULTS FOR 2017-2018			
QUARTER	MEMBER GROWTH NET GOAL	MEMBER GROWTH ACTUAL	DROPPED MEMBERS ACTUAL (including transfers)
JULY/AUG/SEPT	-5	11	20
OCT/NOV/DEC	0	0	0
JAN/FEB/MAR	20	0	0
APR/MAY/JUNE	20	0	0

GOALS AND ACTUAL NEW CLUBS CUMULATIVE



GOALS AND ACTUAL MEMBERS CUMULATIVE



DROPPED CLUBS: 0	6 CLUBS OF 57 ADDED 1 OR MORE NEW MEMBERS	<u>GENDER DISTRIBUTION</u>	
DROPPED MEMBERS		MALE	1,134 (72.00%)
DECEASED	1	FEMALE	441 (28.00%)
CLUB CANCELLED	0	Women Percentage Fiscal Year Goal: 29%	
OTHER	19	TOTAL FAMILY UNIT MEMBERS	389
TOTAL	20	FAMILY MEMBERS PAYING HALF DUES	201

[CLICK HERE FOR CUMULATIVE MEMBERSHIP DATA](#)